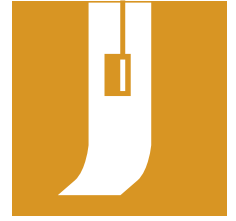
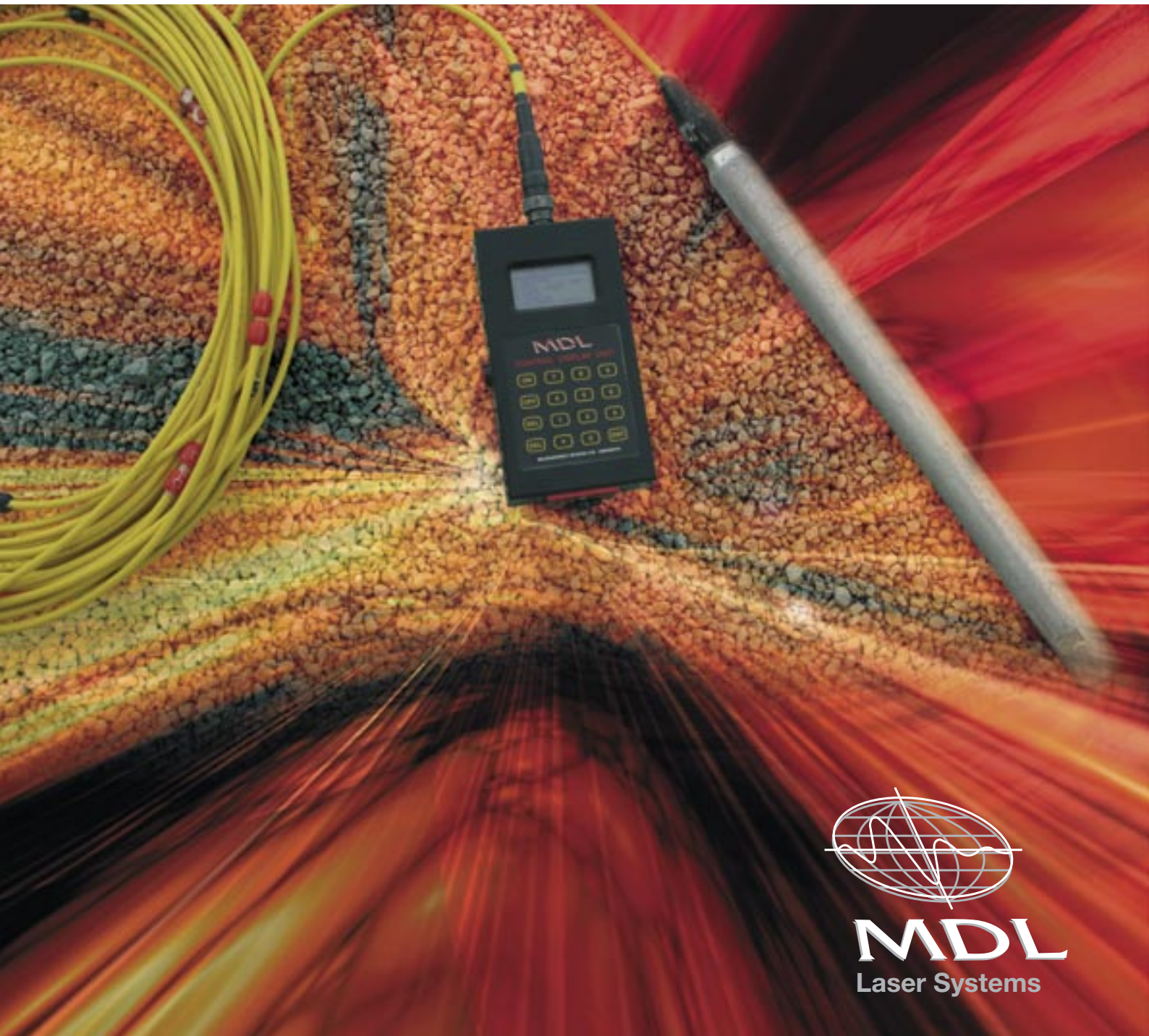


Cabled Boretrak®



MAGNETIC BOREHOLE DEVIATION SYSTEM



a world leader in laser measurement technology

Cabled Boretrak®

MDL's Cabled Boretrak® is a cost effective borehole deviation surveying system, that has been designed to be compact, lightweight, and above all, highly portable.

MDL has designed the Cabled Boretrak® as a means of auditing the results of drilling activity quickly and accurately. Incorrect setting of drill angles, borehole wander and drilling to incorrect depths, results in service problems, particularly in the mining, quarrying and construction industries.

The system features a rugged probe containing a dual axis tilt sensor and digital compass that calculates the borehole deviation from the collar position at fixed intervals. Data is transmitted to the surface via the heavy duty cable and recorded in the MDL CDU logger.

The CDU can be handheld or attached to the MDL lightweight tripod for ease of use.

The Boretrak® system is also supplied with a weighted extension piece that can be filled with lead shot or sand, to ballast the system for use in deep or flooded holes.

MDL's Boretrak® 3D software is used to process the data and produce a hard copy of the results. Holes can be displayed individually, or in any combination to determine hole separations.

The data can also be integrated into 3rd party software systems, including MDL's Face 3D software.





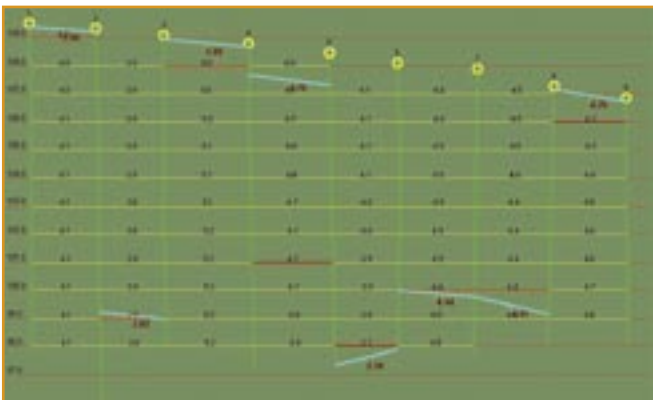
Boretrak® showing complete system including tripod mounted CDU logger'



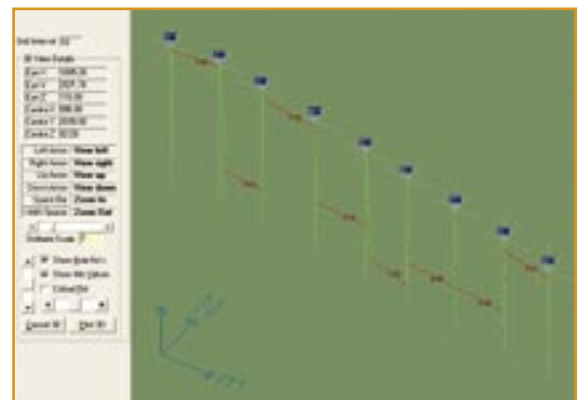
Boretrak® being lowered by hand into borehole



Markers on the cable indicate each metre



Boretrak® 3D front elevation, showing minimum and maximum separations



Boretrak® 3D software showing 3D image of all measured holes



Applications

- Cast blasting
- Exploration drilling
- Foundation drilling
- Engineering works
- Quarry blasting
- Underground mining
- Pre-split blasting
- Dam pinning
- Piling
- Foundations

Benefits

- Improved technology therefore improved productivity
- Accurate borehole deviation therefore more accurate Burden calculations
- More efficient blasting
- Better fragmentation
- Reduced cost of explosives
- Light and easy portable
- Simple to use
- Very little training required

Technical Specification

- Weight of probe: 2.5kg / 5.51lb
- Dimensions of probe: 480mm L x 38mm Dia (18.90in L x 1.50in Dia)
- Weight of cable: 50g / 1.8oz per metre
- Weight of CDU: 800g/ 28.2 oz
- Dimensions of CDU: 210mm x 102mm x 41mm/ 8.2in x 4.02in x 1.61in

Sensor: Dual Axis

- Inclinometer: Range: +/- 40° (from vertical)
Accuracy: 0.2°
Resolution: 0.01°
- Compass Range: 0 - 360°
Accuracy: +/-1° typically when vertical
Resolution: 0.1°

CDU

- Display: 128mm x 64mm / 5.04in x 2.52in
- Memory: 64Kb
- Data download: RS232, selectable baud rate (1200 to 19200)
- Complete system power: 3 x 'C' cells

Environmental

- Probe: depth rated to 100m/ 393.7in (flooded hole)
- CDU: IP66
- Operating temperature: -10°C to +45°C
- Storage temperature: -20°C to +50°C



Boretrak® is a registered trademark of Measurement Devices Limited. All other products and company names mentioned may be trademarks of their respective owners.

Information contained is believed to be accurate. However, no responsibility is assumed by MDL for its use. Technical information is subject to change without notice.

Agent:

For more information on **Cabled Boretrak®** please visit www.mdl.co.uk

Head Office

tel: + 44 (0) 1224 246700 fax: + 44 (0) 1224 824987
e-mail: info@mdl.co.uk

England

tel: + 44 (0) 1904 791139 fax: + 44 (0) 1904 791532
e-mail: york@mdl.co.uk

USA

tel: +1 281 646 0050 fax: +1 281 646 9565
e-mail: info@mdl-laser.com

www.mdl.co.uk

